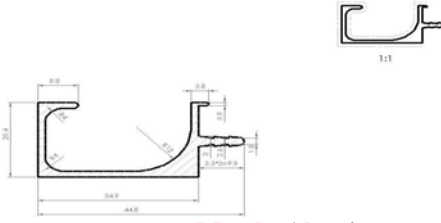


**PAPS-05**



**SIZE- 50 MM X 21MM**  
**3 mtr lenth alu finish**  
**Metal : Aluminum**

**PAPS-008 (3 mtr)**  
**G- PROFILE ALU**



**Metal : Aluminum**  
**FINISH : ALU,SS**

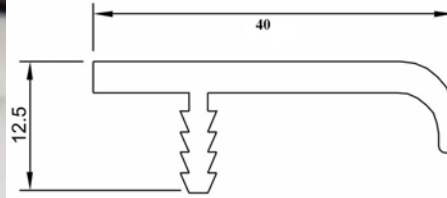
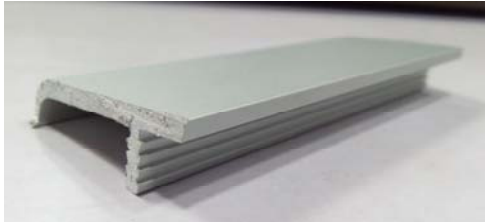
ALU.
SS.
PKG = 10 PCS

**PAPS-09**  
**HANDLE PROFILE**



**Metal : Aluminum**  
**3 MTR**  
**SIZE-40 MM X 18.6 MM**

**PAPS 010**



**Metal : Aluminum**  
**3 MTR**

ALU	JY SS	SS
-----	-------	----

**PAPS-27**  
**HANDLE PROFILE**



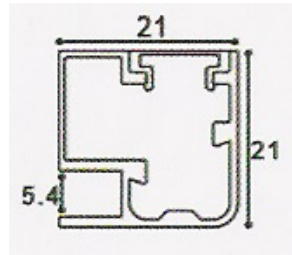
**Metal : Aluminum**  
**3 MTR**  
**SIZE-30 MM X 18.6 MM**

**PAPS-020**  
**PROFILE WITH HANDLE**



**Metal : Aluminum**  
**3 MTR**  
**SIZE- 20 MM**

**PAPS-021**  
**( SHUTTER PROFILE )**  
**INCLUSIVE OF GAS KIT**  
**FOR 4 MM GLASS**



**Metal : Aluminum**  
**FINISH - ALU**  
**WIDTH - 21 MM**

**PAPS-20 PROFILE**



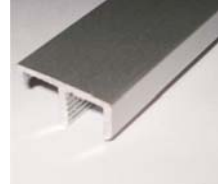
**Metal : Aluminum**  
**3 MTR**  
**SIZE- 20 MM**

**PAPS-102**  
**HANDLE PROFILE**



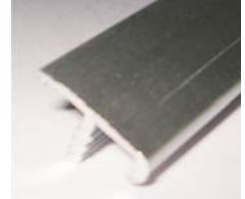
**Metal : Aluminum**  
**3 MTR**  
**SIZE-10 MM X 18.6 MM**

**PAPS-22**  
**[ F TYPE ] PROFILE**



**Metal : Aluminum**  
**SUITABLE 19 MM PLY 3 MTR**

**PAPS-29**  
**[ T TYPE ] PROFILE**



**Metal : Aluminum**  
**SUITABLE 16.5 MM PLY 3 MTR**



**CORNER BRACKET  
CONNECTOR  
( 4 PCS SET )**



**SUITABLE FOR  
PAPS 021 & PAPS 040**

**Metal : Zinc**

**PKG = 25 SET**

**CONECTOR WITH SCREW FOR  
PAPS 45 & PAPS 46 PROFILE**



**IRON**

**PKG = 20 PCS**

**PAPS-04 CONNECTOR**



**4 PCS SET**

**Metal : Iron**

**FOR-PAPS 45 MM**

**PPCA-002 CONNECTOR**



**SIZE - 73 MM x 41 MM**

**SIZE - 70 MM x 37 MM**

**4 PCS SET**

**FOR - PAPS-05**

**Metal : Iron**

**PAPS-19 CONNECTOR**



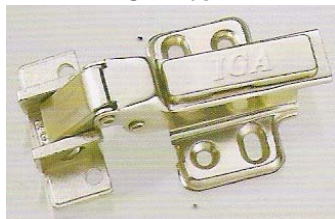
**Metal : Zinc**

**SIZE - 45 MM x 11 MM**

**FOR PAPS 20**

**4 PCS SET**

**CLB-08**



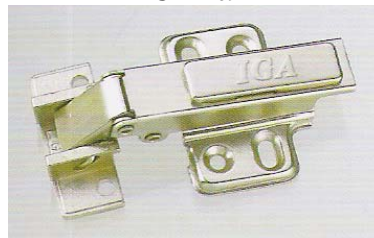
**SLIP ON AUTO HINGES FOR  
SHUTTER PROFILE**

**Metal : Iron & Zinc**

**8°**

**PKG = 50 SET**

**CLB-09**



**SLIP ON AUTO HINGES  
FOR SHUTTER PROFILE**

**Metal : Iron & Zinc**

**0°**

**PKG = 50 SET**

**CLB-07**



**SLIP ON AUTO HINGES FOR  
SHUTTER PROFILE**

**Metal : Iron & Zinc**

**16°**

**PKG = 50 SET**